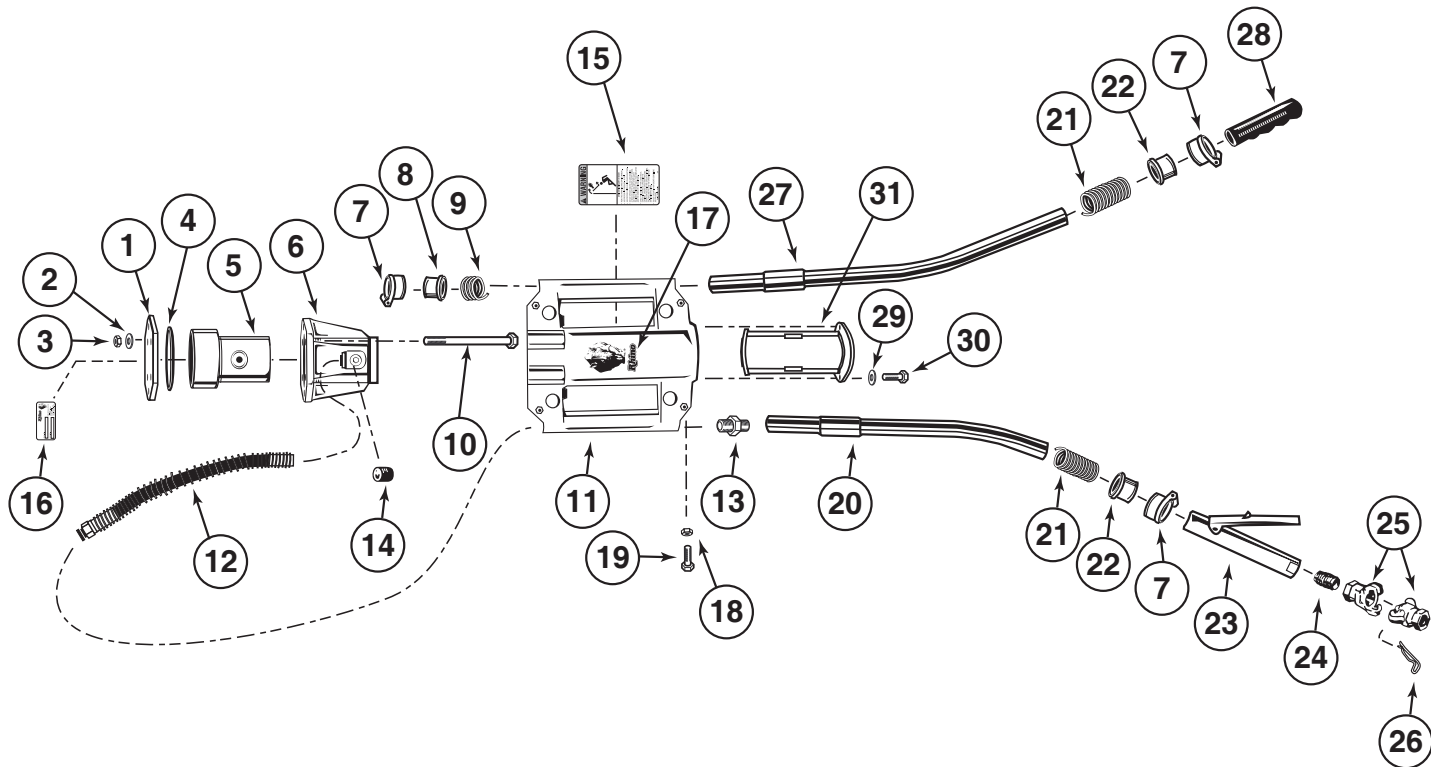


Rhino® PD-39 Driver Parts List



Rhino® PD-39 Driver Parts List

| Number | Part No. | Name | Number | Part No. | Name |
|--------|----------|---------------------------------------------------|------------------------------|----------|----------------------------------------------|
| | 070006 | Model PD-39 with 3-5/8" (92 mm) I.D. Master Chuck | 17 | 000135 | Rhino Decal |
| 1 | 070392 | Top Cover | 18 | 518802 | Hex Nut (4 per driver) |
| 2 | 517705 | Compression Washer (6 per driver) | 19 | 500000 | Cap Screw (4 per driver) |
| 3 | 518814 | Hex Nut (6 per driver) | 20 | 070566 | Handle, Valve Side |
| 4 | 499401 | O-ring | 21 | 610011 | Bottom Compression Spring (2 per driver) |
| 5 | 070034 | Piston | 22 | 070328 | Bottom Bushing (2 per driver) |
| 6 | 070357 | Body | 23 | 610000 | PD-39 Throttle Valve |
| 7 | 070180 | Handle Keeper (4 per driver) | 24 | 610024 | Screen Fitting |
| 8 | 070327 | Top Bushing (2 per driver) | 25 | 606600 | Coupler (2 per driver) |
| 9 | 610010 | Top Compression Spring (2 per driver) | 26 | 606601 | Safety Clip |
| 10 | 500019 | Cap Screw (6 per driver) | 27 | 070567 | Handle, Plain |
| 11 | 070358 | Chuck Assembly | 28 | 700005 | Handle Grip (2 per driver) |
| 12 | 070186 | Hose Assembly | 29 | 517703 | Compression Washer (2 per Adapter, optional) |
| 13 | 606605 | Fitting | 30 | 500041 | Cap Screw (2 per Adapter, optional) |
| 14 | 230402 | Pipe Plug | 31 | 070319 | 2" (76.2 mm) I.D. Chuck Adapter* (optional) |
| 15 | 000244 | Warning Label (back) | * See Chuck Sizing on Page 5 | | |
| 16 | 000187 | Serial Number Label (top) | | | |