



Solar Pro 10" Anvil Mounting

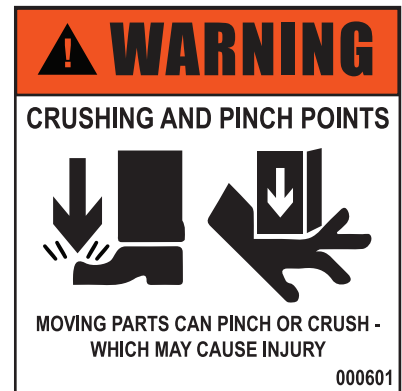
Installation Instructions and Safety Part No. 360277



The checklist below is NOT a substitute for reading the Operation Manual that came with your Solar Pro Omni Adjustable Skid Steer Mounted Pile Driver. Please make sure all operators have read and understand both the Skid Steer Operation Manual and the Solar Pro Operation Manual BEFORE operating these machines.

SAFETY

- BEFORE servicing or operating, personnel working with or near the pile driver must be familiar with all safety hazards.
- Operators and personnel working with or near pile drivers must have proper PPE.
- BEFORE performing service, maintenance or inspections, operation personnel must be properly trained.
- NEVER perform service, maintenance or inspections, while the skid steer or attachment is in operation.



BEFORE PERFORMING SERVICE

- Pile driver must be in the horizontal storage position.
- If pile driver is connected to skid steer: Park skid steer on firm and level ground. Lower pile driver. Engage skid steer parking brake.
- Before servicing the attachment, stop the skid steer engine and relieve all hydraulic pressure.
- Place a Do Not Operate tag on control panel.

TOOLS REQUIRED

- 1/2-13 Lifting Eye
- Sling/Chain/Rigging
- Additional Lift Support – Example: Lifting Crane.
- Wrenches/Sockets for 3/4" Hardware:
 - 1-1/8"
 - 1-1/16"

DISASSEMBLY INSTRUCTIONS

- 1.) Before disassembly, the unit should be on level ground with the mast lowered. Hammer should be moved approximately 1 to 2 feet from stop block. **Fig. 1**
- 2.) Items shown circled in red will need to be removed from the Solar Pro, and set aside to be reused. Items shown in blue will be part of the 10" Anvil kit and will be replaced. Refer to Section 9.2 Hammer Parts, in the Operation and Parts Manual. **Fig. 2**

Fig. 1

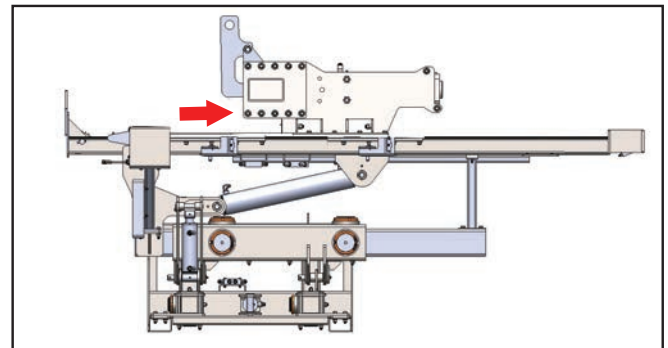
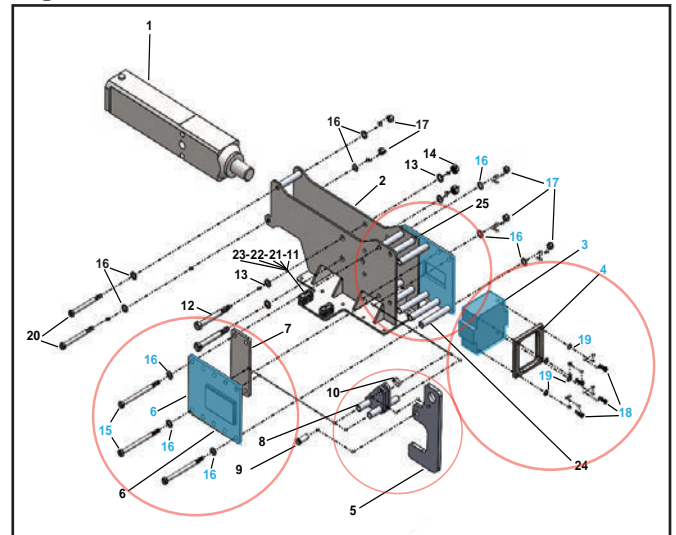


Fig. 2





Solar Pro 10" Anvil Mounting Installation Instructions and Safety

DISASSEMBLY INSTRUCTIONS cont.

- 3.) Fully Screw Lifting Eye into the Anvil at the hole that is accessible behind the Puller MT (P/N 360170).
Fig. 3



WARNING: Check that Lifting Eye is fully screwed into the anvil BEFORE lifting



WARNING: Check that the Chain/Sling/Rigging is securely attached to the lifting eye and the lift support (Crane) BEFORE lifting.



WARNING: Lift and rigging must be able to carry a minimum load of 100 lbs. (37 kg).

- 4.) After completing Step 3, remove the 4 bolts connecting the side plate to the hammer mount.
Fig. 4 To allow clearance to lift the entire assembly, it may be necessary to loosen an additional bolt. Fig. 5

Fig. 3



Fig. 4

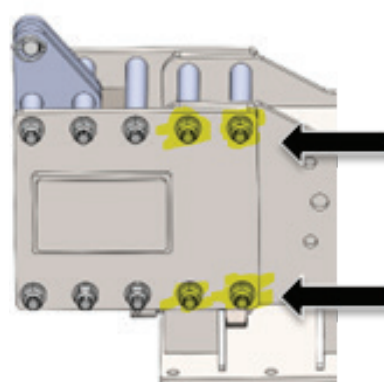
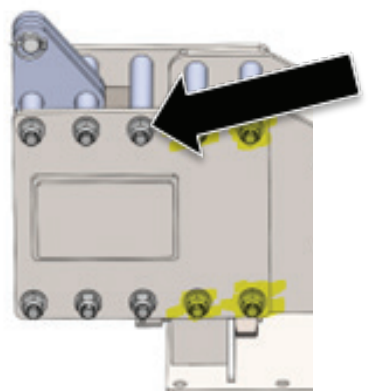


Fig. 5



CAUTION: Loose bolts can cause the Anvil to drop from the hammer and cause injury.

- 5.) Once the Anvil and old assembly parts are lifted to a worktable, set aside the parts to be reused, as well as the parts from the new 10" Anvil Kit P/N 360277 (2 - 10" Anvil Guide Plates, 10" Anvil and hardware.).
Fig. 6

Fig. 6



If lifting the new Anvil on to the work table, follow the instructions outlined in in Step 3.



Solar Pro 10" Anvil Mounting Installation Instructions and Safety

- 6.) Line up the bolts on one of the Anvil Guide Plates as shown. Carefully place the 10" Anvil facing up so the lifting eye can be screwed into the side of the new anvil. **See Fig.7**
- 7.) Following the precautions in Step 3, lift the new Anvil into place on the Anvil Guide Plate as shown. **See Fig.8**
- 8.) Slide the Tube Hammer Bolts onto the 6 bolts already placed on the Anvil Guide Plate. Attach the Puller MT and tubes on left side as shown. **See Fig.9**
- 9.) Place the second Anvil Guide Plate on top of the new 10" Anvil, and bolts with tubes. Tighten 6 bolts enough to keep the anvil from dislodging, before preparing to reattach the lifting hook. **See Fig.10.1, 10.2, 10.3**

Fig. 7

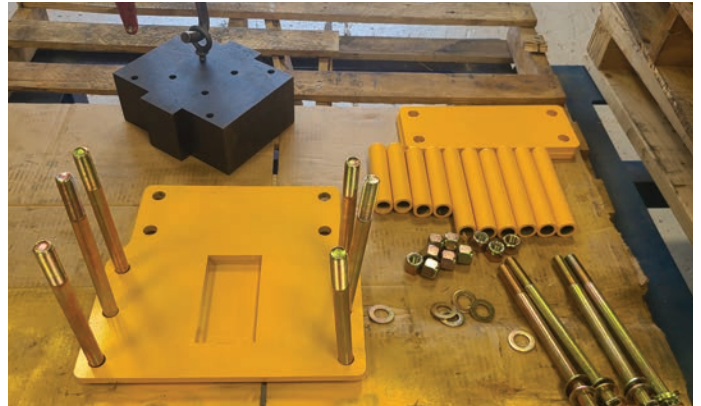


Fig. 8



Fig. 9



Fig. 10.3



Fig. 10.2



Fig. 10.1



10.) After tightening bolts enough to hold the 10" Anvil, make sure the lifting eye is fully screwed into the Anvil at the top. Keeping the anvil on the work surface, hold the slightly loose guide plate while lifting the entire assembly so that the puller mount is pointing up. See Fig.11.1, 11.2



CAUTION: Loose bolts can cause the Anvil to drop from the hammer and cause injury.



- 11.) If the guide plate is too loose, tighten slightly, so that the entire 10" Anvil Assembly can be lifted into place in front of the hammer. See Fig.12.1, 12.2
- 12.) Keep the rigging in place. Once the guide plate is lined up with the small plate, and the plate around the hammer, slide the bolt through part way, leaving enough room to slide on the tube hammer bolts over the screw. Once all the tubes and screws have been lined up through all the plates, tighten the bolts.
- $\frac{3}{4}$ 10 grade 8 bolt torque:
 340 ± 44 lb-ft or
 460 ± 60 N-m
- See Fig.13.1, 13.2, 13.3
- 13.) BEFORE removing the rigging, check that all bolts are in place and tightened.

Scan the QR code below to download a PDF of the Solar Pro Owners Manual



Fig. 11.1



Fig. 11.2



Fig. 12.1



Fig. 12.2



Fig. 13.1



Fig. 13.2



Small Plate

Fig. 13.3



Tube Hammer Bolts