

# PL-3™

## Hydraulic Post Puller Manual





Pneumatic • Hydraulic • Gasoline  
Professional Grade Tools



A Tradition of Quality and Service Since 1975

Visit [rhinotool.com/dealer-locator](http://rhinotool.com/dealer-locator) to find your nearest Rhino® dealer.

© Copyright 2017 Rhino Tool Company, Inc.

 [www.rhinotool.com](http://www.rhinotool.com)  
 866-707-1808

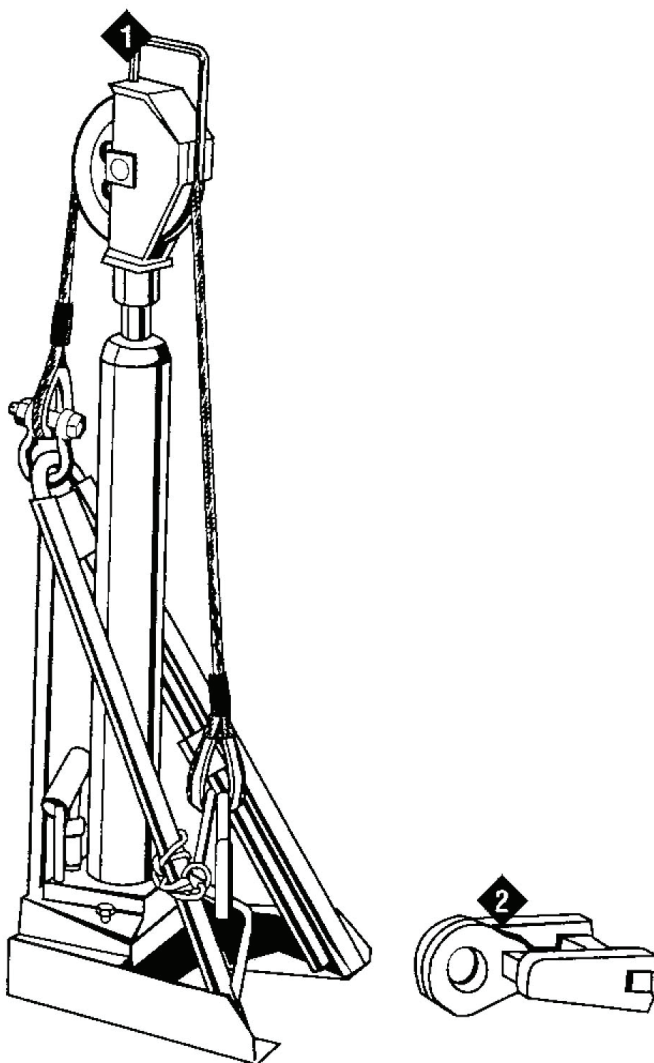
# PL-3™

## Hydraulic Post Puller Manual



Pneumatic • Hydraulic • Gasoline  
Professional Grade Tools

### Fast Facts



	Model and/or Part No.	Height	Width & Length	Hook Opening	Cable	Pulling Stroke	Weight
1	PL-3 071000	38' 965 mm	13-1/4' x 13-1/4' 337 mm x 337 mm	1' 25.4 mm	3/8" 9.5 mm	17" 432 mm	53lbs 24 kg
2	071040	Post Grabber with an Opening of 4-3/8' Wide x 2-1/2' Deep (111 mm x 63.5 mm) for the Post to be Pulled and a 1-1/2' (38.1mm) Hook Eye Opening, Weighting 11.38 lbs (5.16 kg).					



Pneumatic • Hydraulic • Gasoline  
Professional Grade Tools

# Hydraulic Post Puller Manual

Your Rhino Model PL-3 Hydraulic Post Puller has been designed to make pulling posts as easy as possible.

It is **VERY IMPORTANT** to understand your post puller operating instructions before using your unit. It is also very important that you make sure all operators are trained to operate your post puller safely. If you or any operator doesn't understand any of the instructions, call Rhino collect at 866-707-1808 and we will be happy to answer any questions.

**▲ WARNING - AVOID SERIOUS INJURY OR DEATH, READ BEFORE USING YOUR POST PULLER!**

## GENERAL INSTRUCTIONS

---

The PL-3 Hydraulic Post Puller is meant to pull posts up to 4' x 4' wood posts or 4' x 6' H column beams. Do not overload the post puller. It is designed as a 3 ton puller.

**▲ WARNING - DO NOT USE THE PL-3 HYDRAULIC POST PULLER FOR ANY APPLICATION OTHER THAN THOSE SPECIFIED BY THE MANUFACTURER**

### SAFETY EQUIPMENT

Do Not operate the post puller unless the operator and any others near the post puller are wearing hard hats, safety glasses, safety shoes, back supports, and any other safety equipment advised by Ansi, Niosh, Osha, or any other safety regulatory agency, or the employer or the owner of this post puller.

### CARRYING/ STORAGE CONFIGURATION

The Model PL-3 Hydraulic Post Puller is shipped to you in the carrying/storage configuration. The PL-3 should be carried by the half round bar located on the back of the unit for balance. After use, the unit should be reassembled to the carrying/storage configuration, so all components will be rigid and easily transportable. Secure the handle so it will not be lost.

### SETTING UP FOR USE

Straddle the post to be pulled with the puller feet. The post should be centered between the feet and as close to the hydraulic cylinder as possible. Remove the pump handle from its storage socket. Use the two notches on the lower end of the handle to turn the hydraulic valve on the lower part of the hydraulic pump/cylinder counter clockwise. This opens the cable/hook assembly from its carrying position on the puller support leg. Place a Rhino Post Grabber around the post or double wrap a chain around the post to be pulled. Additional chain must be at least 3/8" grade 80 chain with a minimum working load capacity of 3 tons. Cross the chain over itself so it will tighten up as you start to pull. Connect the post grabber or chain to the puller hook. Using the pump handle, tighten the hydraulic valve clockwise.

### ▲ CAUTION

**SAFETY CHECKS: ALWAYS PUT SAFETY FIRST!** Check your PL-3 each time you use it for loose bolts, broken or missing E clips or cotter pins, frayed or broken wires in the cable, cracks, bulges or abnormalities in welds, castings, pulley mount, base, pulley, pins, hook, anchor shackle, hydraulic ram or any other part on or used with the puller. Do not repair any parts. Immediately replace worn or defective parts with new ones. Do not use the post puller with worn or defective parts. Doing so could result in serious injury or death.

### ▲ CAUTION

**SAFETY PRECAUTIONS DURING USE:** Stay clear of the chain assembly, chains, etc. and always use the safety restraint while pulling. If it is necessary to use a chain, always use a chain that is at least 3/8" grade 80, in excellent condition and has a working load rating of at least 3 tons like the PL-3. A broken chain can whip upward and/or around causing injury. It is always best to have at least two people when pulling a post, one operating the post puller and one to control the post so it will not fall and injure someone as it comes out to the ground.

# PL-3™

## Hydraulic Post Puller Manual



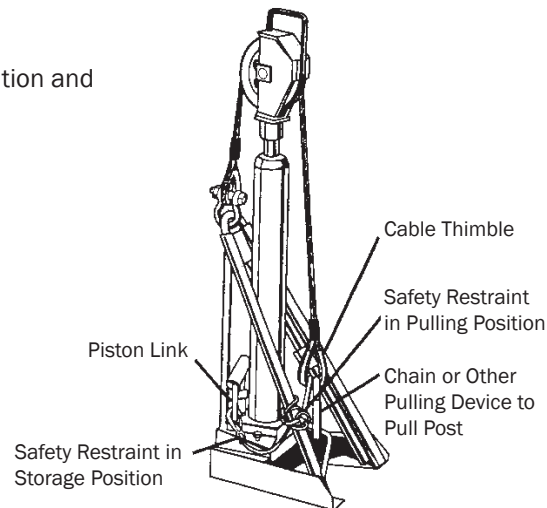
Pneumatic • Hydraulic • Gasoline  
Professional Grade Tools

### ▲ WARNING

**ALWAYS USE THE SAFETY RESTRAINT AT THE START OF A PULL.** - The purpose of the safety restraint is to restrain the hook, post grabber, chain, etc. from striking the operator in the event the chain or other pulling device breaks when the post is being pulled.

### CONNECT SAFETY RESTRAINT:

Detach the hook of the safety restraint from its storage position and hook it into the cable thimble where the cable hook is attached to the cable.



### USING THE POST PULLER:

Insert the pump handle into the hydraulic pump socket. With an up and down motion, pump up the PL-3 hydraulic cylinder. As soon as the post starts moving out of the ground, remove the safety restraint from the cable thimble and reattach it to the base of the puller. If the safety restraint starts to become taut and the post hasn't started to move yet, lower the grabber or chain and start to pull again.

### ▲ WARNING

**DON'T KEEP PULLING AFTER THE SAFETY RESTRAINT BECOMES TAUT OR YOU WILL BREAK IT.**

After the post starts to move, the pressure to keep the post moving will be less and the safety restraint can be removed. If the post stops coming up, reposition the post grabber or chain to the base of the ground again and reconnect the safety restraint.

### ▲ WARNING

**DO NOT OVERLOAD THE POST PULLER. IF YOUR PUMP HANDLE STARTS TO FLEX OR BEND, STOP PUMPING. YOU ARE AT THE POINT OF OVERLOADING YOUR POST PULLER.**

If the post to be pulled is deeper than three feet, you may have to collapse the hydraulic cylinder to lower the post grabber or chain on the post to pull it further.

### ▲ WARNING

**DO NOT ATTEMPT TO PULL POSTS THAT HAVE BEEN SET IN CONCRETE. THE POST PULLER FEET WILL SET ON TOP OF THE CONCRETE AND YOU WILL BE USING THE PULLER HYDRAULICS TO PULL AGAINST THE UNIT, WHICH MAY CAUSE DAMAGE TO THE UNIT**

In some cases, posts may be very hard to pull. The larger the post, the more force it takes to pull it. Some times the posts rust and seem to bond with certain types of soil. When some soils dry out, they become concrete-like and make it very difficult, if not impossible, to pull. If you have a post that is difficult to pull, start to pull the post and, while there is hydraulic pressure pulling on the post, have someone hit the post with a sledge hammer to shock it and this can cause it to release from the soil. Some posts may be so firmly embedded in the soil that they will have to be dug out.

### STORING THE POST PULLER:

After the post is pulled, release the hydraulic valve, turning it counter clockwise. Collapse the hydraulic cylinder and reconnect the hook to its carrying position on the support leg. Using the pump handle, close the hydraulic valve by turning it clockwise and pump the hydraulic cylinder up until the cable is taut. Do not apply very much pressure. You simply want to tension the cable so that the unit is easily carries. Place the pump handle in its storage socket.

# PL-3<sup>TM</sup>

## Hydraulic Post Puller Manual



Pneumatic • Hydraulic • Gasoline  
Professional Grade Tools

**▲ WARNING**

If your PL-3 warning label is marred or destroyed, replace it immediately. Simply call Rhino Tool Company and we will send you a new warning label at no charge.

**▲ CAUTION**

Do not repair any PL-3 parts. Order new ones. If the cable assembly becomes worn, replace it immediately with a new cable assembly.

If your Model PL-3 Hydraulic Post Puller, or any other Rhino product or part is not performing properly, let Rhino or your Rhino dealer, distributor or representative know. If you don't know what is wrong with your Rhino unit, you can send it, freight prepaid, to Rhino Tool Company and we will examine it free of charge and let you know what is wrong, if it can be fixed and what it will cost for repair. Remember, freight must be prepaid so please call first so we are expecting your unit. If there is nothing wrong with your unit or if your unit is repaired, Rhino always replaces all bolts, lock washers and gaskets with a charge for those parts along with reassembly.

You have purchased a quality, rugged post puller and if you give your Rhino Post Puller reasonable care, it will give you efficient, trouble-free service.

If you have any questions regarding the operation of your Model PL-3 Post Puller, please let us know - we will be happy to help.

# PL-3<sup>TM</sup>

## Hydraulic Post Puller Parts



Pneumatic • Hydraulic • Gasoline  
Professional Grade Tools

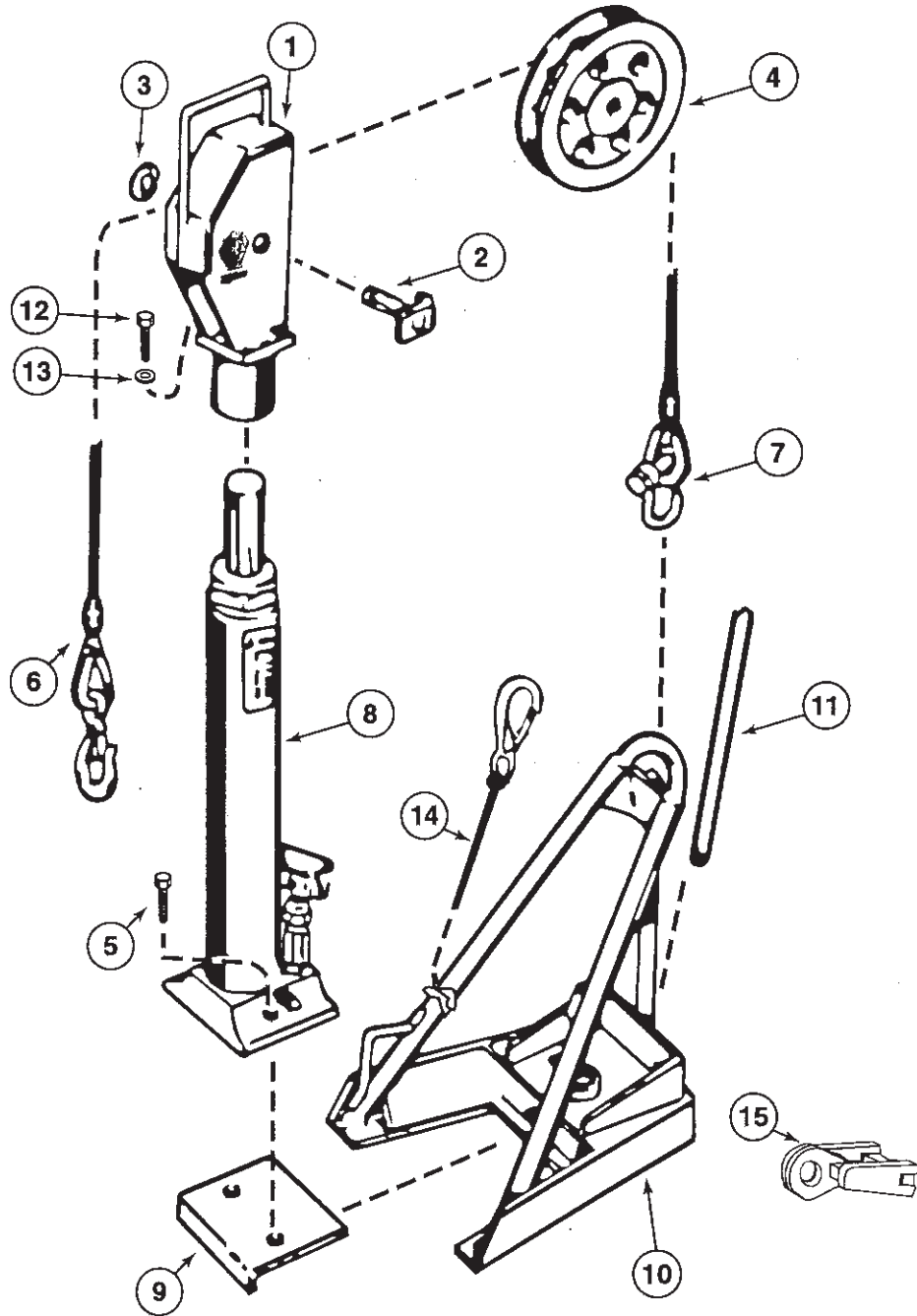
NO.	DESCRIPTION	PART NO.	NO. REQUIRED
	PL-3 Hydraulic Post Puller	071000	
1	Pulley Mount	070173	1
2	Pulley Pin	070173	1
3	Retaining Ring	531001	1
4	Pulley	602026	1
5	Cap Screw	500182	2
6	Cable Assembly	220399	1
7	Anchor Shackle	220400	1
8	Hydraulic Pump/Cylinder Assembly	070445	1
9	Mounting Plate	070440	1
10	Base	070446	1
11	Handle	070416	1
12	Cap Screw	500041	1
13	Lock Washer	517801	1
14	Safety Restraint	220401	1
15	Post Grabber	071040	1

# PL-3™

## Exploded View



Pneumatic • Hydraulic • Gasoline  
Professional Grade Tools



# PL-3™

## Hydraulic Pump/Cylinder Assembly



Pneumatic • Hydraulic • Gasoline  
Professional Grade Tools

NO.	DESCRIPTION	PART NO.	NO. REQUIRED
	PL-3 Hydraulic Pump/Cylinder Assembly	070445	
	PL-3 Seal Kit (includes parts with asterisk)	220569	1
1	Ram Assembly (includes no. 5, 7, 8, 9, 10)	220582	1
2	Reservoir Head	220577	1
3	O-Ring*	220530	1
4	Ram	220578	1
5	Up-Stop Ring*	220579	1
6	Bushing	220580	1
7	Back-up Ring*	220573	1
8	U-Cup*	220572	1
9	Ram Cylinder	220581	1
10	Plug*	220532	1
11	Reservoir	220548	1
12	Handle Socket	220550	1
13	Piston Link	220552	1
14	Pin*	220551	2
15	Retaining Pin*	220575	2
16	Handle	070416	1
17	Packing Nut	220553	1
18	Pump Wiper*	220534	1
19	Pump Cylinder	220554	1
20	Pump Piston	220535	1
21	Piston Cup*	220536	1
22	Piston Cylinder Washer*	220537	1
23	Release Screw Pin	220556	1
24	Release Screw	220557	1
25	O-Ring*	220541	1
26	Valve Ball (13/32 dia.)*	220540	1
27	Valve Ball (5/18 dia.)*	220539	1
28	Valve Ball (7/32 dia.)*	220538	1
29	Link Pin	220555	1
30	Base Assembly (Includes No. 13, 28, 29)		

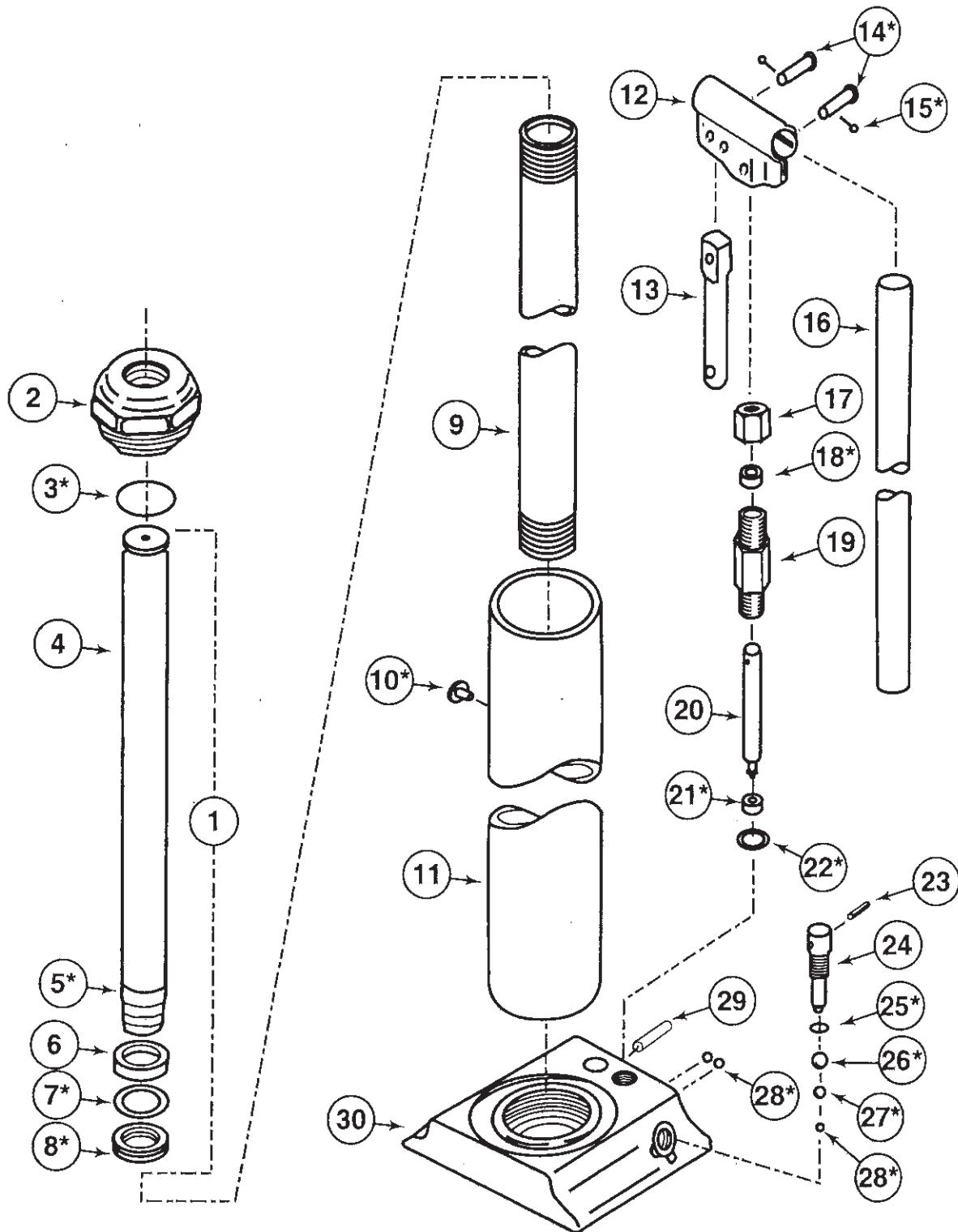


# PL-3™



Pneumatic • Hydraulic • Gasoline  
Professional Grade Tools

## Exploded View Hydraulic Pump/Cylinder Assembly



# Limited Warranty

## Hydraulic Post Pullers



Pneumatic • Hydraulic • Gasoline  
Professional Grade Tools

<b>WARRANTY:</b>	<b>RHINO TOOL COMPANY</b> warrants to the original purchaser for a period of thirty (30) days from the date of purchase that its Hydraulic Post Puller is free from defects in manufacture and materials. In the event of a defect during the Warranty period, the product must be returned freight prepaid to Rhino Tool Company. If inspection shows a defect in material or workmanship, Rhino will repair or replace without charge.
<b>EXCLUSIVE REMEDY:</b>	The sole and exclusive remedy under this Warranty is repair or replacement of the product by <b>RHINO TOOL COMPANY</b> .
<b>DISCLAIMER:</b>	<b>IN NO EVENT SHALL RHINO TOOL COMPANY BE LIABLE FOR INDIRECT, INCIDENTAL OR CONSEQUENTIAL DAMAGES ARISING FROM THE SALE OR USE OF THIS PRODUCT, AT ANYTIME, RHINO TOOL COMPANY DISCLAIMS LIABILITY FOR ANY IMPLIED WARRANTIES, INCLUDING IMPLIED WARRANTIES OF "MERCHANTABILITY" AND "FITNESS FOR A SPECIFIC PURPOSE".</b>
<b>LIMITATION:</b>	This Warranty <b>DOES NOT APPLY</b> to the physical appearance of any product or to any product which has been misused, abused, improperly maintained, altered or repaired by unauthorized persons, or to repairs required by normal wear and tear.
<b>TRANSFERABILITY:</b>	The above Limited Warranty is non-transferable.



### IMPORTANT!

The purchase of a Rhino Tool as outlined above automatically serves as the product registration and the start of the customer's thirty (30) days warranty. The Rhino Service Technician will use our number marking on the tool and proof of purchase supplied by the customer, to determine if the tool is still covered by warranty.

It is recommended that the dealer or customer keep a sales receipt or other record of the purchase date to assist in accurately determining warranty coverage on the tool.

If a repair or replacement is needed within thirty (30) days a Warranty Claim form will need to be completed at that time. Any repair or replacement requires Pre-Approval by a Rhino Authorized Service Technician.

To begin the pre-approval process for your warranty claim, go online at:

<https://rhinotool.com/service/warranties/manual-post-pullers/>

Or call Rhino customer service toll-free at 1-866-707-1808 for assistance.



Rhino Tool Company • 1134 West South Street • P.O. Box 111 • Kewanee, IL 61443 • [www.rhinotool.com](http://www.rhinotool.com)  
Tel: 866-707-1808 • Fax: 309-856-5905- Rhino Tool Company has a policy of continuous product improvement and reserves the right to change specifications, designs, or prices at any time without notice or incurring obligations for said changes.  
Copyright 2018 Rhino Tool Company