



Hydraulic Post Drivers



The RHINO Difference

How Rhino Hydraulic Tools drive your productivity and profits



Pneumatic • Hydraulic • Gasoline
Professional Grade Tools



Dependable

Rhino hydraulic tools are tough enough to work in the most extreme conditions. The closed system remains free from dust, is water-resistant and has no exhaust fumes at the tool. Rhino hydraulic tools can run in wet/freezing temperatures, require minimal maintenance due to fewer internal parts and are manufactured with the highest quality standards for long lasting, professional-grade tools.



Operator Comfort

Exceptional vibration dampening systems, strong, one-piece handles, plus enough tool strength to reduce the need of the operator to force the tool into the material being driven. The tool does the work. This higher performance combined with the lightweight power of the tools creates a higher level of comfort for the operator.



Efficient

Rhino hydraulic tools are smaller, lighter and easier to use without sacrificing performance. Rhino hydraulic tools save space, use easy, durable mechanical controls instead of electronic controls, and require less cost to operate and maintain than similar tools using alternate power sources.



Versatile

Rhino Hydraulic tools offer the flexibility to use Rhino Power Packs or to be operated using the Rhino Oil Flow Divider to connect to other hydraulic power sources such as a tractor, excavator or skid steer. The Rhino Hydraulic Post Driver can also use additional chuck attachments from the Rhino Pneumatic Tool Line.



Satisfaction Guarantee

Rhino stands behind the professional grade tools that we supply. If a Rhino Hydraulic Tool was selected and purchased through an authorized Rhino Distributor/Dealer, and you are not satisfied with its performance after the first 14 days of operation - contact Rhino at customersatisfaction@rhinotool.com to discuss your concerns. Rhino will resolve your issue with a needed accessory, change to a more appropriate model, or product return.

HPD

Hydraulic Post Driver



Pneumatic • Hydraulic • Gasoline
Professional Grade Tools



The Rhino® HPD 60 is a high-performance hydraulic post driver perfect for fencing, road signs, farm, ranch, forestry, vineyards, guardrail, anchors, tent stakes - essentially any heavy duty driving job.

Efficient driving power -

Compact and lightweight with performance equal to much larger, bulkier pounders.

Durable and low maintenance -

Quality craftsmanship, innovative design, fewer wear parts, and continuous lubrication in an enclosed system make our hydraulic tools practically maintenance-free. One piece shuttle valve, and a nitrogen accumulator that lasts 7-times longer than a typical tool.

Increased operator safety and comfort -

Vibration dampening, ergonomic design, and built-in handle for lift-assist if required.

Adaptable to multiple conditions -

Closed system can be used in wet conditions. Hydraulics will not freeze up in below-zero temperatures.

Multiple power source options-

Can be used with Rhino Hydraulic Power Packs, or with other power sources, such as tractors, work trucks, excavators and skid steers. Use of a Rhino HFD or other Oil Flow Divider is recommended to protect against overload from larger power sources.

Cost effective-

No compressor costs. Post Driver/Power Pack can be hauled easily and access difficult job sites. Tool efficiency reduces fuel consumption.

Versatile-

Adapters and drive caps from the Rhino PD-55 post driver, can also be used with the HPD-60 to fit ground rod, channel, square and round posts. The Chuck-Lok Adapter system from the Rhino Gas Post Drivers is also available for 2 3/8" & smaller post driving.



Easily accessible, quick release trigger, flat face quick couplings and vibration dampening, lightweight performance expedite post driving.



Use the optional remote valve (801011) with the HPD 60 for driving tall posts.

HPD 60 Specifications

Weight	64 lbs (29 kg)
Weight including adaptor and hoses	68.5 lbs (31 kg)
Oil Flow	8 g.p.m. (30 l.p.m.)
Working Pressure	1725 psi (120 Bar)
Max. setting pressure relief valve	2300 psi (160 Bar)
Max. return pressure	220 psi (15 Bar)
Blow frequency	1380 (1/min.)
Blow energy	95 (Joule)
Max. oil temperature	158° F (70° C)
Accumulator Charging Pressure	730 psi (50 Bar)
Cooling capacity needed	3 kW
Accumulator Charging Pressure	730 psi (50 Bar)
Cooling capacity needed	3 kW
Accumulator Charging Pressure	730 psi (50 Bar)
Chuck Size	Varies by post O.D.
<u>Largest chuck possible</u>	
Round	Max. 3 3/4" (Ø 95 mm)
Square	Max. 2 5/8" x 2 5/8" (67 x 67 mm)
Hexagon	Max. 3 1/4" (82 mm)

HPD 60 Standard Equipment

801010	HPD 60 Hydraulic Post Driver
	3 7/8" (98.4 mm) I.D. Master Chuck
	One set of 12" x 1/2 Hydraulic Whip Hoses
	Flat Face Quick Connect Couplings
	Trigger Valve

Applications

Post Types

- T-Post
- Ground Rod
- Tent Stakes
- Schedule 40 Pipe up to 3 7/8" diameter
- Channel Posts up to 3-4 lbs/ft
- Square Posts



PORTABLE POWER & PRODUCTIVITY

The HPD 60 can be powered with the HPP 14 Flex™ or HPP 18V Flex™ Power Packs or with other hydraulic power sources. Use of a RHINO HFD or other Oil Flow Divider is recommended.



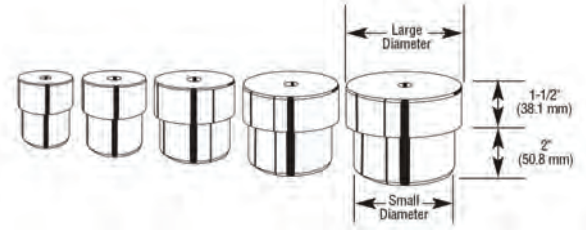
HPD 60 Parts and Accessories

801016	PLEASE NOTE HPD Master Chuck is required with the following chuck adapters		
070609	3 1/2"	(88.9 mm)	Chuck Adapter
070610	3"	(76.2 mm)	Chuck Adapter
070611	2 1/2"	(63.5 mm)	Chuck Adapter
070612	2"	(50.8 mm)	Chuck Adapter
070613	1 1/2"	(38.1 mm)	Chuck Adapter
070614	1"	(25.4 mm)	Chuck Adapter
070617	1-1 1/2 lbs/ft Channel Post		Chuck Adapter
070618	2-2 3/4 lbs/ft Channel Post		Chuck Adapter
070619	3-4 lbs/ft Channel Post		Chuck Adapter
070615	2"	(50.8 mm)	Heavy Chuck Adapter



Insert the T-Bar into the hole in the drive cap to remove if stuck in the pipe after driving.

Drive caps are for Schedule 40 Pipe. Please call Rhino to order drive cap for Schedule 80 pipe.



The small outer diameter (O.D.) of the round drive cap should fit within the I.D. of your round post.

HPD 60 Round Drive Caps

			Height (mm)	Large Diameter(mm)	Small Diameter(mm)
PLEASE NOTE Drive Caps are necessary to minimize damage to posts being driven.					
071260	2"	Drive Cap for Schedule 40 Pipe w/T-Bar and Clip	3.5" (88.9)	2.375" (60.325)	2.04" (50.84)
071261	2 1/2"	Drive Cap for Schedule 40 Pipe w/T-Bar and Clip	3.5" (88.9)	2.875" (73.025)	2.45" (176.4)
071262	3"	Drive Cap for Schedule 40 Pipe w/T-Bar and Clip	3.5" (88.9)	3.5" (88.9)	3.05" (77.47)

HPD 60 Parts and Accessories for Break-Away Anchor Posts

801016	PLEASE NOTE HPD Master Chuck is also required with the following Break-Away Systems and will also require a chuck adapter and a drive cap		
070832	Chuck Adapter for the Channel Post Break-Away Anchor System		
070836	Drive Cap for the Channel Post Break-Away Anchor System		
071014	Chuck Adapter for the Square Tube Break-Away Anchor System		
071004	1 1/4"	Drive Cap for the Square Tube Break-Away Anchor System	
071005	1 1/2"	Drive Cap for the Square Tube Break-Away Anchor System	
071006	1 3/4"	Drive Cap for the Square Tube Break-Away Anchor System	
071007	2"	Drive Cap for the Square Tube Break-Away Anchor System	
071008	2 1/4"	Drive Cap for the Square Tube Break-Away Anchor System	
071009	2 1/2"	Drive Cap for the Square Tube Break-Away Anchor System	
Custom	4 1/4"	Round Master Chuck	
Custom	4 1/16" x 4 1/16"	Square Master Chuck	

Anchor Drive Caps are sold by the outside dimension of the anchor.

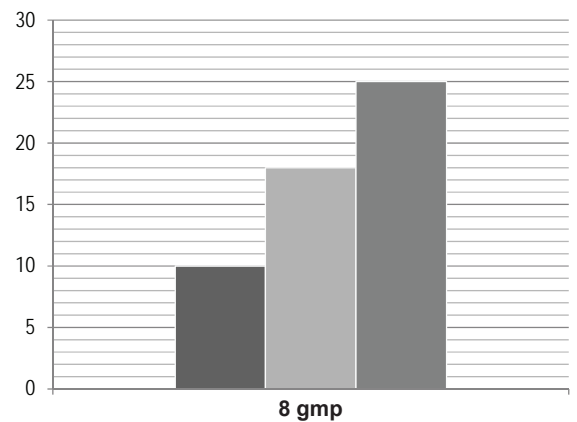
HPD 60 Optional Accessories

801005	HFD Oil Flow Divider*
801226	Extension Hose (20")
801227	Extension Hose (30")
801230	HPP 14 Flex Power Pack
801214	HPP 18V Flex Power Pack
801011	Remote Valve with 6" Whip Hose and 6' Hose

HPD-60™ Performance Chart

Maximum length of different size hoses.

■ 3/8" hose diameter ■ 1/2" hose diameter ■ 5/8" hose diameter



Pressure from Power Pack: 2175 psi (150 bar) Flow: 8 gpm, (30 lpm)
zero elevation 2 set couplings per 32.8' hose



* The HFD Oil Flow Divider is for use with other power sources, skid steer/mini excavator, it is not necessary with RHINO HPP power packs. The HFD is adjustable to accommodate 8 gpm, 10 gpm, and 12 gpm flow rates. The HFD protects the tool against overload. Never let the power source run with higher oil flow (number of revolutions) than necessary.

For installing Square Tube or Channel Post for Traffic Safety Signs, the add-on chucks, adapters and drive caps below can each be ordered separately to fit the size and type of post you are installing. Please contact a Rhino representative if you have any questions about these systems.

Square Tube Break-Away Anchor System*

PLEASE NOTE HPD 3 7/8" (98.4 mm) I.D. Master Chuck (801016) is also required with the following Break-Away Systems and will also require a chuck adapter and a drive cap.

Drives Square Anchors within 2 inches of ground level.
Will drive up to a 2 1/2" square anchor***

Adapter Part Number:

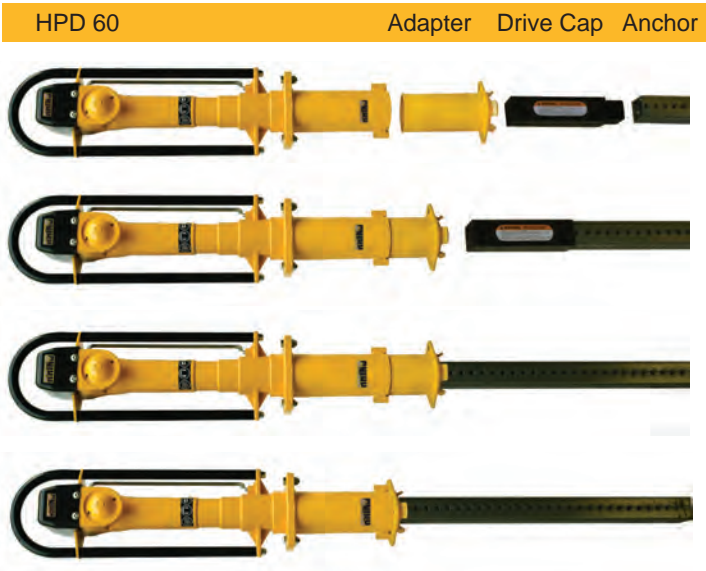
071014 Chuck Adapter for the Square Tube Break-Away Anchor System

Drive Cap Part Numbers for use with above adapter:

- 071004 1 1/4" Drive Cap for the Square Tube Break-Away
- 071005 1 1/2" Drive Cap for the Square Tube Break-Away
- 071006 1 3/4" Drive Cap for the Square Tube Break-Away
- 071007 2" Drive Cap for the Square Tube Break-Away
- 071008 2 1/4" Drive Cap for the Square Tube Break-Away
- 071009 2 1/2" Drive Cap for the Square Tube Break-Away

* HPD 60 Hydraulic Post Driver Sold Separately

**Anchor Drive Caps are sold by the outside dimension of the anchor.



Channel Post Break-Away Anchor System*

PLEASE NOTE HPD 3 7/8" (98.4 mm) I.D. Master Chuck (801016) is also required with the following Break-Away Systems and will also require a chuck adapter and a drive cap.

Drives Channel Post Anchors within 2 inches of ground level.
Will drive up to a 4 lb/ft Channel Post Anchor.

Adapter Part Number:

070832 Chuck Adapter for the Channel Post Break-Away Anchor System

Drive Cap Part Numbers for use with above adapter:

070836 Drive Cap for the Channel Post Break-Away Anchor System

This Adapter and Drive Cap is to be used for anchors only. The drive cap can present a safety hazard as the drive cap is not attached to the driver or adapter and can fall and cause injury.

* HPD 60 Hydraulic Post Driver Sold Separately



HPP 18TM

Hydraulic Power Pack



Pneumatic • Hydraulic • Gasoline
Professional Grade Tools



Portable Power and Productivity

Rhino® Hydraulic Power Packs are the power source companions for Rhino's hydraulic tools. Rhino® HPPs are designed for professional users who expect maximum operating time, low service cost and durability.

The Rhino® HPP 18V Flex™ has an adjustable flow to supply a wide range of attachable tools.

An innovative cooling fan, found on all Rhino Hydraulic Power Packs, greatly reduces the chance of overheating.

Long run times between required maintenance intervals, keeps your crew on the job.

The units are easy to operate, provide more power and lower fuel consumption.

Durable, compact bodies, lightweight frames, wheels, and pull-out handles make them easy to transport.

Specifications	HPP 18V Flex
Weight, lbs (kg)	232 (105)
Dimensions LxWxH in (mm)	31-5/8 x 24 x 27-3/8" (710 x 595 x 645)
Oil flow, gpm (lpm)	Adjustable Control Lever, 5-8-10 (20-30-40)
	at 1800 - 3600 rpm
Max. pressure, psi (bar)	2300 (160)
Nominal Pressure, psi	1750 (120)
Engine	Vanguard 2-cylinder
	18 HP (gross power)
	4-stroke gas (petrol) normal or unleaded
	Engine oil 0.3 gal. (1.1 litres)
Fuel Tank Size, gallon (litres)	2.2 (8.5)
Starter	Recoil and Electric
Part No.	801214
Standard Equipment	Recoil Start, Adjustable Flow, Direct Pump Driven Air-Fan Oil Cooler, Engine Oil Level Switch, Oil-filter with Bypass Protection, Quick Connect Couplings
Optional Accessories	Part No.
Extension Hose (20')	801226
Extension Hose (30')	801227



Features

- Pull out handles for easy maneuverability
- Compact size loads in most job site vehicles
- Same power as a compressor, but less fuel used
- All one piece, steel frame
- Cooling system design does not clog with dirt
- Easy to change oil filter
- Easy operation and efficient design
- HPP 18V Flex has both electric and recoil start
- Replaces the need for a compressor investment

Benefits

- Transport anywhere
- Save money on fuel and transport costs
- Strong construction withstands rigors of job site
- Can operate in cold temperatures without freezing
- Low maintenance, low cost to operate
- No exhaust from tools
- Enclosed Hydraulic system extends life of tools
- Recoil Starter on HPP 18 V Flex can be used to start the power pack even with a dead battery
- Less than half the cost of a compressor, equal the capacity.

Standard Equipment

801214	HPP 18 Flex
	Recoil and Electric Start, Adjustable Flow, Direct Pump Driven Air-Fan Oil Cooler, Engine Oil Level Switch, Oil-filter with Bypass Protection, Quick Connect Couplings

Accessories

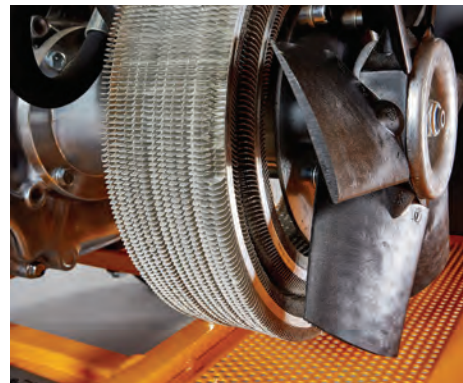
801226	Extension Hose (20')
801227	Extension Hose (30')

Applications

Rhino® Hydraulic Power Packs can power not only Rhino Hydraulic tools, but with the use of variable flow adjustment, our power packs can run a variety of popular hydraulic tools, such as:

- Breakers
- Cut-off Saws
- Diamond Chainsaws
- Core Drills
- Submersible Pumps

Essentially any tools requiring 5 gpm - 10 gpm at 1750-2300 psi can be run with a Rhino® Hydraulic Power Pack.



The HPP's efficient cooling system keeps out dirt and debris. Easy access allows cleaning of the radiator with a low pressure washer. (*Less than 500 psi.*)

HPP 14TM

Hydraulic Power Pack



Pneumatic • Hydraulic • Gasoline
Professional Grade Tools

Portable Power and Productivity

Rhino® Hydraulic Power Packs are the power source companions for Rhino's hydraulic tools. Rhino® HPPs are designed for professional users who expect maximum operating time, low service cost and durability.

The Rhino® HPP 14 Flex™ and HPP 18V Flex™ have an adjustable flow to supply a wide range of attachable tools.

An innovative cooling fan, found on all Rhino Hydraulic Power Packs, greatly reduces the chance of overheating.

Long run times between required maintenance intervals, keeps your crew on the job.

The units are easy to operate, provide more power and lower fuel consumption.

Durable, compact bodies, lightweight frames, wheels, and pull-out handles make them easy to transport.



Specifications	HPP 14 Flex
Weight, lbs (kg)	179 (81)
Dimensions LxWxH in (mm)	28 x 23.5 x 25.375" (710 x 595 x 645)
Oil flow, gpm (lpm)	Adjustable Control Lever, 5-8 (20-30) at 2500 - 3600 rpm
Max. pressure, psi (bar)	2200 (150)
Nominal Pressure, psi (bar)	1750 (120)
Engine	Vanguard 400
	14 HP (gross power)
	4-stroke gas (petrol) normal or unleaded
	Engine oil 0.3 gal. (1.1 litres)
Fuel Tank Size, gal.(ltr.)	1.6 (6)
Starter	Recoil
Part No.	801230
Standard Equipment	Recoil Start, Adjustable Flow, Direct Pump Driven Air-Fan Oil Cooler, Engine Oil Level Switch, Oil-filter with Bypass Protection, Quick Connect Couplings
Optional Accessories	Part No.
Extension Hose (20')	801226
Extension Hose (30')	801227

HPP 14 Features

- Pull out handles for easy maneuverability
- Compact size loads in most job site vehicles
- Same power as a compressor, but less fuel used
- All one piece, steel frame
- Cooling system design does not clog with dirt
- Easy to change oil filter
- Easy operation and efficient design
- HPP 18V Flex has both electric and recoil start
- Replaces the need for a compressor investment

Benefits

- Transport anywhere
- Save money on fuel and transport costs
- Strong construction withstands rigors of job site
- Can operate in cold temperatures without freezing
- Low maintenance, low cost to operate
- No exhaust from tools
- Enclosed Hydraulic system extends life of tools
- Recoil Starter on HPP 18 V Flex can be used to start the power pack even with a dead battery
- Less than half the cost of a compressor, equal the capacity.

Standard Equipment

801230	HPP 14 Flex
	Recoil Start, Adjustable Flow, Direct Pump Driven Air-Fan Oil Cooler, Engine Oil Level Switch, Oil-filter with Bypass Protection, Quick Connect Couplings

Accessories

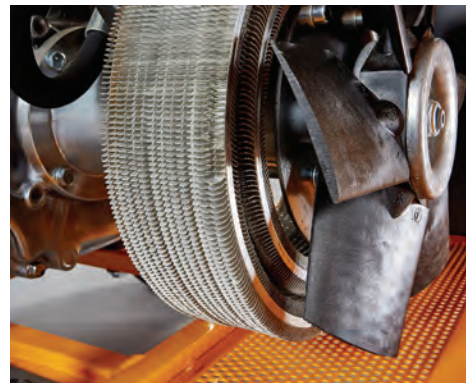
801226	Extension Hose (20')
801227	Extension Hose (30')

Applications

RHINO® Hydraulic Power Packs can power not only Rhino Hydraulic tools, but with the use of variable flow adjustment, our power packs can run a variety of popular hydraulic tools, such as:

- Breakers
- Cut-off Saws
- Diamond Chainsaws
- Core Drills
- Submersible Pumps

Essentially any tools requiring 5 gpm - 10 gpm at 1750-2300 psi can be run with a RHINO® Hydraulic Power Pack.



The HPP's efficient cooling system keeps out dirt and debris. Easy access allows cleaning of the radiator with a low pressure washer. (*Less than 500 psi.*)



RHINO TOOL COMPANY, INC.

General Warranty Conditions & Limitations on Liability

Rhino® Limited Warranty Air Operated Post Drivers

The purchase of a Rhino Tool, as outlined in the warranty terms, automatically serves as the product registration and the start of the customer's One year (12 months) warranty. The Rhino Service Technician will use our number marking on the tool and proof of purchase supplied by the customer, to determine if the tool is still covered by warranty.

Warranty: RHINO TOOL COMPANY warrants to the original purchaser for a period of One Year (12 months) from the date of purchase that its Air Operated Post Driver is free from defects in manufacture and materials. In the event of a manufacturing defect during the Warranty period, the Post Driver must be returned freight prepaid to RHINO TOOL COMPANY. If inspection shows a defect in material or workmanship, RHINO will repair or replace without charge.

Exclusive Remedy: The sole and exclusive remedy under this Warranty is repair or replacement of the product by RHINO TOOL COMPANY.

Disclaimer: In no event shall RHINO TOOL COMPANY be liable for indirect, incidental or consequential damages arising from the sale or use of this product, at any time. RHINO TOOL COMPANY disclaims liability for any implied warranties, including implied warranties of "Merchantability" and "Fitness for a Specific Purpose".

Limitation: This Warranty DOES NOT APPLY to the physical appearance of any product or to any product that has been misused, abused, improperly maintained, altered or repaired by unauthorized persons, or to repairs required by normal wear and tear.

Transferability: The above Warranty is non-transferable.

Important Instructions for obtaining warranty:

For Warranty Claims contact your dealer or distributor. Proof of purchase date and serial number is required. In the event of a warranty repair, the post driver should be returned to Rhino Tool Company. Rhino's obligation under this Limited Warranty is expressly limited to the repair or replacement, at Rhino's election, of such defective Air Post Driver, which is proved to be defective upon inspection by a Rhino-certified/authorized technician.

This Limited Warranty does not extend to an Air Powered Post Driver which has been subject to misuse, neglect, or accident, nor does it extend to any Air Powered Post Driver which has been repaired, altered, or serviced by unauthorized persons. This Limited Warranty does not cover any damage or adjustments required to any Air Powered Post Driver if such damage or adjustment is caused by the use of supplies, parts, or attachments not sold or approved by Rhino.

EXCEPT AS OTHERWISE PROVIDED HEREIN, RHINO DISCLAIMS ALL OTHER WARRANTIES, EXPRESS OR IMPLIED, INCLUDING, BUT NOT LIMITED TO THE IMPLIED WARRANTIES OF MERCHANTABILITY AND FITNESS FOR A PARTICULAR PURPOSE. UNDER NO CIRCUMSTANCES SHALL RHINO BE LIABLE FOR ANY LOSS OF BUSINESS, REVENUES, OR PROFIT OR OTHER INDIRECT, INCIDENTAL, SPECIAL OR CONSEQUENTIAL DAMAGES OR LOSS ARISING OUT OF ANY DEFECTS IN OR PERFORMANCE OF THE AIR POWERED POST DRIVER, HOWSOEVER CAUSED.

It is recommended that the dealer or customer keep a sales receipt or other record of the purchase date to assist in accurately determining warranty coverage on the tool.

If a repair or replacement is needed within 1 year a Warranty Claim form will need to be completed at that time. Any repair or replacement requires Pre-Approval by a Rhino Authorized Service Technician. Contact service@rhinotool.com for pre-approval.



Pneumatic • Hydraulic • Gasoline
Professional Grade Tools

Visit rhinotool.com for more information on power packs and post drivers

A Tradition of Quality and Service Since 1975

Rhino Tool Company, Inc.
1143 W. South St., Kewanee, IL 61443
Toll-Free: 866-707-1808
www.rhinotool.com

