



PD-110™ / PD-140™ PD-200™

AIR-OPERATED POST DRIVER OWNERS MANUAL



MODELS: 070593, 070594, 070746, 070758

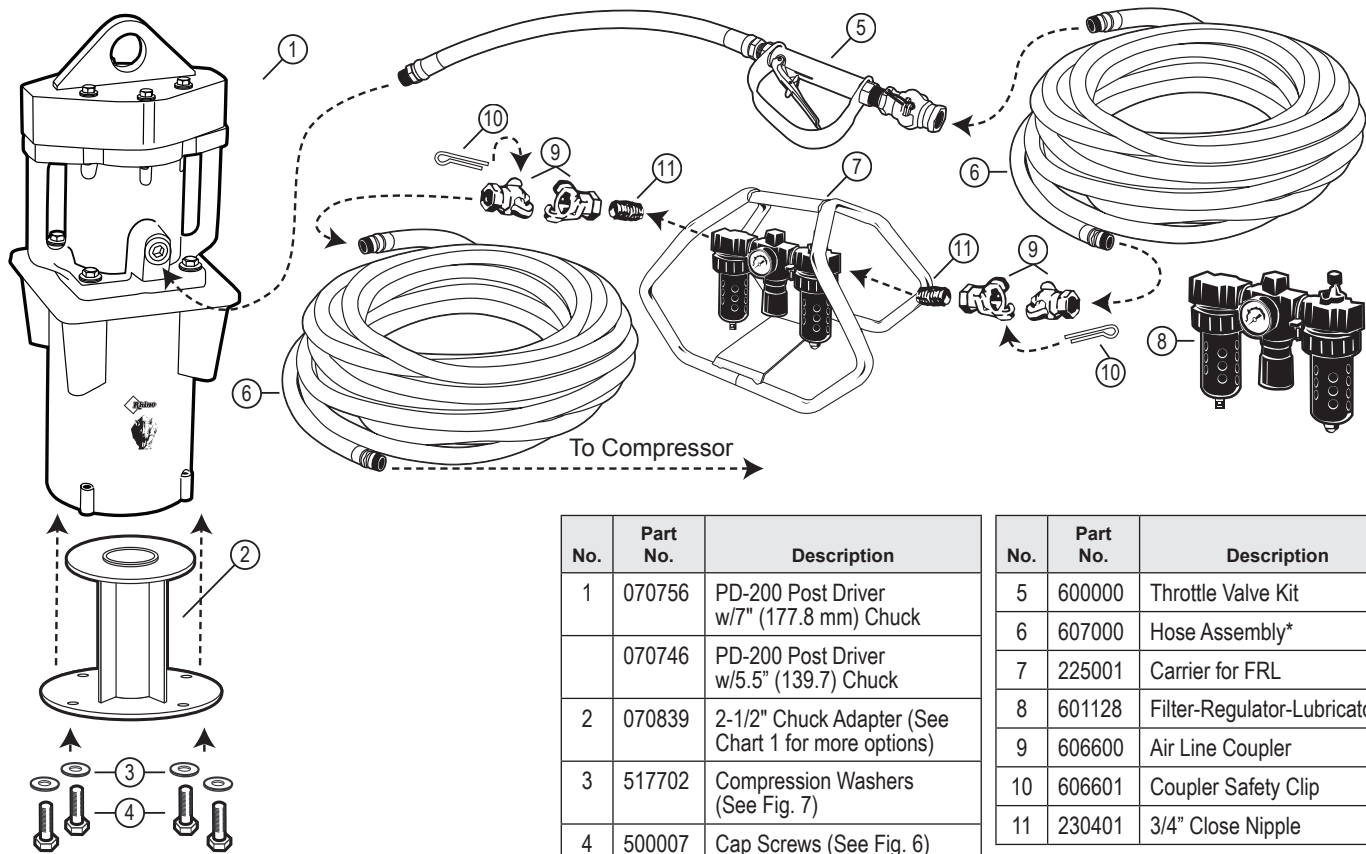


Fig. 4 - Connecting PD-200 to a post driving system.

No.	Part No.	Description
1	070756	PD-200 Post Driver w/7" (177.8 mm) Chuck
	070746	PD-200 Post Driver w/5.5" (139.7) Chuck
2	070839	2-1/2" Chuck Adapter (See Chart 1 for more options)
3	517702	Compression Washers (See Fig. 7)
4	500007	Cap Screws (See Fig. 6)

No.	Part No.	Description
5	600000	Throttle Valve Kit
6	607000	Hose Assembly*
7	225001	Carrier for FRL
8	601128	Filter-Regulator-Lubricator
9	606600	Air Line Coupler
10	606601	Coupler Safety Clip
11	230401	3/4" Close Nipple

*Order to desired length

No.	Part No.	Description
1	606600	Coupler
2	606601	Safety Clip
3	610024	Screen Filter Fitting
4	610026	Throttle Valve w/Lever Guard
5	605006	3/4" (19 mm) Hose Per Foot*

* Order length needed

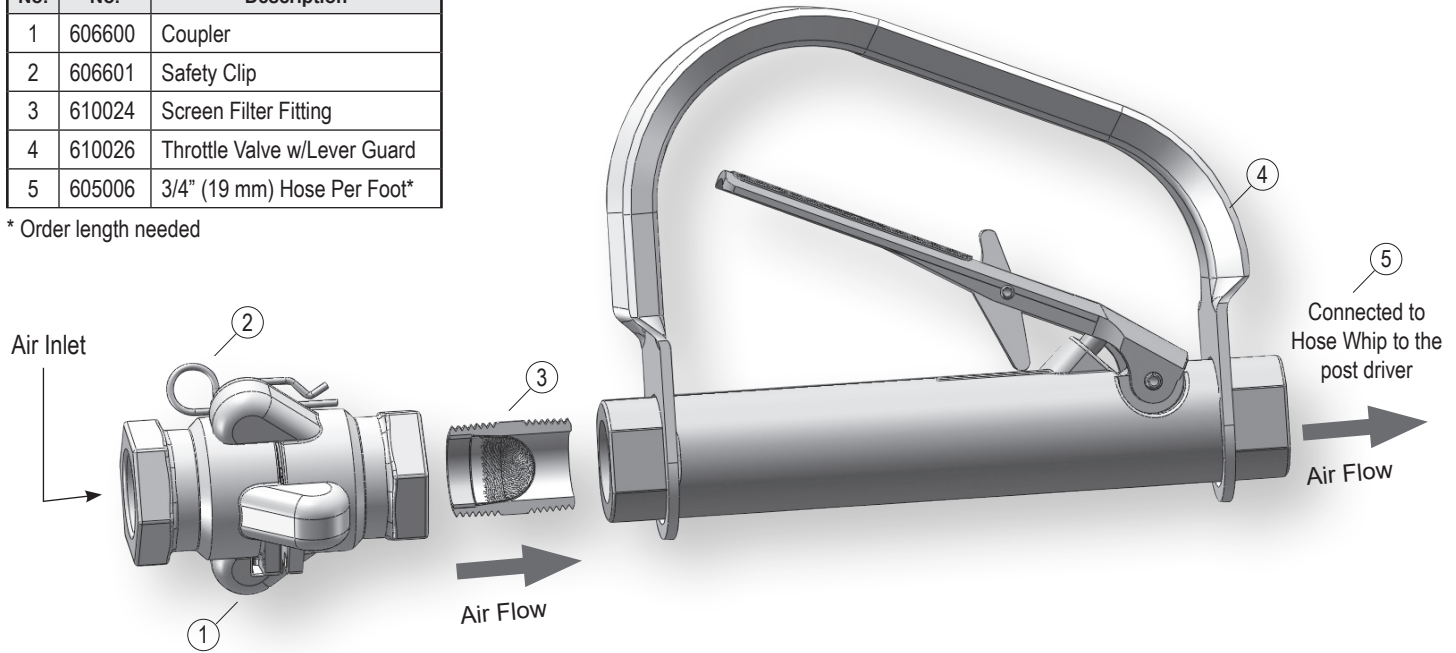
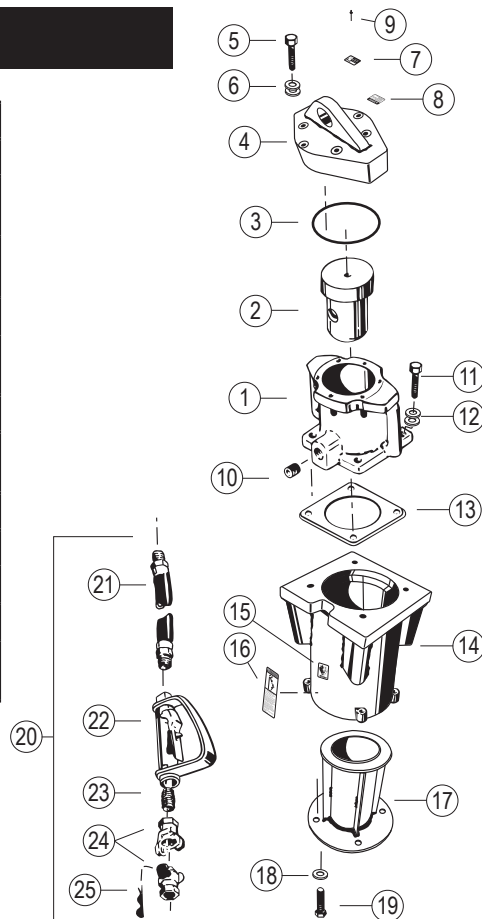


Fig. 5 - Assembly of the Throttle Valve.

RHINO® PD-200 DRIVER PARTS LIST

No.	P/N	Description
	070745	Model PD-200 with 5-1/2" (139.7 mm) I.D. Master Chuck
1	070585	Body
2	070046	Piston
3	499403	O-ring
4	070750	Top Cover
5	500027	Cap Screw (6 per driver)
6	517705	Compression Washer (12 per driver)
7	241	Model/Serial No. Plate
8	242	Warning Plate
9	519004	Metal Tack (8 per driver)
10	230400	Pipe Plug
11	500180	Cap Screw (4 per driver)
12	517702	Compression Washer (4 per driver)
13	700008	Gasket
14	070746	5-1/2" (139.7 mm) I.D. Master Chuck Assembly*
15	135	Rhino Decal

No.	P/N	Description
16	245	Warning Label
17**	070782	(Optional) 3-1/8" (79.4 mm) I.D. Chuck Adapter for 5-1/2" Master**
18	517702	Compression Washer (4 w/optional adapter)
19	500007	Cap Screw (4 w/optional adapter)
20	600000	Throttle Valve Kit w/ 5 ft. Hose Assembly***
21	607000	3/4" (19 mm) Hose Assembly
	605006	3/4" (19 mm) Hose Per Foot (Order Length Needed)
22	610026	Throttle Valve with Lever Guard
23	610024	Screen Fitting
24	606600	Coupler (2 per Throttle Valve Kit)
25	606601	Safety Clip
	070756	Model PD-200 with 7" (177.8 mm) I.D. Master Chuck



* Includes numbers 11, 12, 13, 14, 15, 16

** See page 4 for specifying Chuck Adapter to your application

*** Includes number 21, 22, 23, 24, 25

† Includes number 11, 12

RHINO® PD-200 DRIVER PARTS LIST

No.	P/N	Description
Accessories (mm)		
	601128	Filter-Regulator-Lubricator
	225001	Carrier for the Filter-Regulator-Lubricator
	071260	2" (50.8) Drive Cap for Schedule 40 Pipe with T-Bar and Clip
	071261	2 ½" (63.5) Drive Cap for Schedule 40 Pipe with T-Bar and Clip
	071262	3" (76.2) Drive Cap for Schedule 40 Pipe with T-Bar and Clip
	071263	3 ½" (89) Drive Cap for Schedule 40 Pipe with T-Bar and Clip
	071264	4" (101.6) Drive Cap for Schedule 40 Pipe with T-Bar and Clip
	070061	4"x6" (101mm x 152mm) H Column Chuck** †
	070062	4"x6" (101mm x 152mm) H Drive Cap
	070063	4"x4" (101mm x 101mm) Wood Post Chuck** †
	070761	PD 200 6x6 Master Chuck Assy
	070597	PD 200 Slotted Sheet Pile Master Chuck

No.	P/N	Description
5-1/2" (139.7 mm) Master Chuck		
	070842	PD 200 2 ½" (63.5) Chuck Adapter
	071080	PD 200 2 ½" (63.5) Funnel Adapter
17	070782	PD 200 3 1/8" (79) Chuck Adapter
	070783	PD 200 3 ¾" (86) Chuck Adapter
	070784	PD 200 4 ¼" (105) Chuck Adapter
	070785	PD 200 4 ¾" (121) Chuck Adapter
	071034	PD 200 - 5 ½" MC (139.7) Adapter for the 3" Heavy Square Tube Break-Away Anchor System
	071039	PD 200 Adapter for the Channel Post Break-Away Anchor System
	070836	Drive Cap for the Channel Post Break-Away Anchor System
	071043	PD 200 Adapter for the Square Post Break-Away Anchor System
	071004	1 ¼" (31.75) Drive Cap for the Square Tube Break-Away Anchor System
	071005	1 ½" (38) Drive Cap for the Square Tube Break-Away Anchor System
	071006	1 ¾" (44.45) Drive Cap for the Square Tube Break-Away Anchor System

No.	P/N	Description
	071007	2" (50.8) Drive Cap for the Square Tube Break-Away Anchor System
	071008	2 ¼" (57.15) Drive Cap for the Square Tube Break-Away Anchor System
	071009	2 ½" (63.5) Drive Cap for the Square Tube Break-Away Anchor System
7" (178 mm) Master Chuck		
	070758	7" (178 mm) I.D. Master Chuck Assembly*
	070839	PD 200 2 ½" (63.5) Chuck Adapter
	070786	PD 200 3 1/8" (79) Chuck Adapter
	070787	PD 200 3 ¾" (86) Chuck Adapter
	070788	PD 200 4 ¼" (105) Chuck Adapter
	070789	PD 200 4 ¾" (121) Chuck Adapter
	070790	PD 200 5 ¼" (133) Chuck Adapter
	070791	PD 200 5 ¾" (146) Chuck Adapter

Symptom	Explanation/Procedure
Post lodged in the driver	<ol style="list-style-type: none"> 1. Remove the 2 bolts that secure the adapter and separate the driver from the adapter. 2. Slide the adapter down the post to expose the top of the post. With the proper cutting tool for the type of post, cut through the post below the flared portion. 3. Once the deformed portion is removed, slide the adapter off the post and reassemble it to the driver. Please follow bolt tightening procedure.
Drives post slow or sluggish performance	<ol style="list-style-type: none"> 1. Inspect the chuck to see if there is any foreign material blocking the piston. 2. Check to see if piston is moving freely by disconnecting the driver from air, tipping upside down and back upright. You should be able to hear the piston moving freely. 3. Check to ensure the rate of lubrication is adequate. 4. If using a FRL, inspect the filter on the FRL, if impacted with residue replace with new filter. 5. Inspect the filter on the Throttle. If clogged, blow off debris with air hose, or clean with a common cleaning solvent. 6. Check to see if air pressure is correct 7. Check output on compressor 8. In temperatures under 40°F (4°C) or high humidity conditions check air lines and tool for icing.
Noticeable air passing through driver or “blow by”	To confirm this condition exists, connected to air source, place driver on a post, while activating the throttle lift the driver slightly if the piston increases in activity blow by is confirmed. This indicates there is most likely damaged or worn parts inside the driver. In this event the driver should be sent to Rhino Tool Company to be inspected and we will report if the driver is repairable.
Other problems or technical questions	Other problems or technical questions: Document your serial number and contact Rhino Tool Company. Phone: 309.853.5555 or Toll Free 866-707-1808, Fax:309.856.5905, Email: service@rhinotool.com . In Europe contact Eurogate Int. F: (0031) (0) 523 638286, M: (0031) (0) 610 502607.



A TRADITION OF QUALITY AND SERVICE SINCE 1975

WWW.RHINOTOOL.COM

Form 000307-01/2017

Rhino Tool Company, Inc. | P.O. Box 111 | Kewanee, IL 61443 | 309.853.5555 | 866-707-1808